

روش گاوآژ در نوزادان



- تهیه و تدوین : حمید ترابیان – کارشناس ارشد پرستاری
کودکان-مربی عضو هیئت علمی بالینی پرستاری



Gavage feeding





تکنیکهای تعبیه NG OR OG TUBE



- length tube from the tip of the nose to the lobe of the ear to the midpoint between the xiphoid process and the umbilicus
- Lubricate the tip of the tube with sterile water









کنترل محل صحیح نوک لوله تغذیه

- Pulling back on the plunger to aspirate
- فقدان مایعات نشانگر قطعی محل نادرست لوله نمی باشد
- Injecting a small amount of air (1 to 3 ml)
- it is possible to hear air entering the stomach even if the tube is positioned above the gastroesophageal (cardiac) sphincter



تعیین محل صحیح نوک NGT



- use x-ray as the gold standard
- Best place: body of the stomach, and above the pylorus. tip below the level of the disc 11th and 12th thoracic(31)

- بهترین محل قرار گیری نوک NGT
- استاندارد طلایی تعیین محل نوک NGT؟



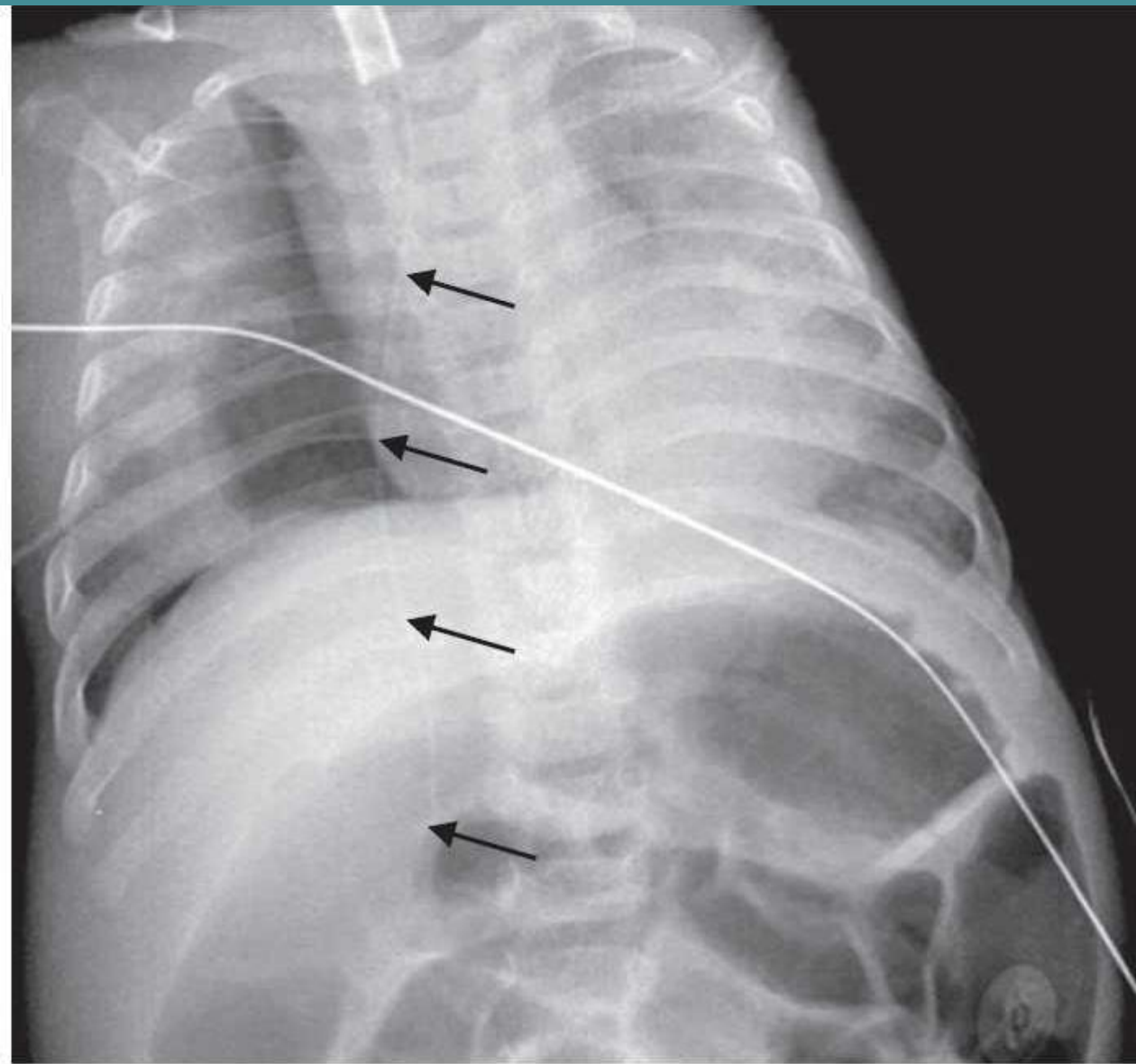
دو مدل رایج تعیین میزان عمق لوله معهده ای در نوزادان



- **1- NEMU method**
- **Nose**→**Earlobe**→**Xiphoid process**→**Midline of the Umbilicus (NEMU)**
- **2- NEX method**
- **Nose**→**Earlobe**→**Xiphoid (NEX)**

مدل ۲ دیگر منسوخ شده





فطا در جاينگزارى و
ورود کاتتر در
برونش راست

Feeding tube passes down the right main stem bronchus and to the base of the R lung.



روشهای تعیین محل نوک NGT



1-In a survey of NICUs across the United Kingdom, only 45% of the units were using pH testing to verify placement.^[47]

2-73% of the NICUs continued to use the auscultation of insufflated air as a method for verification

3-Ultrasound(100% sensitivity)



NGT روشهای تعیین محل نوک



4-Capnography(with 98% accuracy)

5-X RAY



مزیت‌های OG نسبت به NG



- most infants are preferential nose breathers. NGT CAUSE lower oxygen saturations (21)
- nasogastric tubes tendency toward nares necrosis
- no difference between a nasally or orally placed tube in relation to episodes of apnea or bradycardia.



تغذیه دهانی حین داشتن OGT&NGT



- 1-breast milk or formula is given to the infant through a nasogastric or orogastric tube
- 2-kangaroo care while gavage feeding
- 3-nonnutritive sucking
- 4-Finger feeding



nonnutritive sucking



*nonnutritive
sucking is
encouraged*



مزایای ساکینگ غیر تغذیه ای



1-improve oxygenation

2-decreased energy expenditure with less restlessness and to positive weight gain

3- promote faster attachment to the nipple when oral feedings are initiated

(Wyckoff et al., 2003).



روش وميزان گاواژ نوزاد



- Feedings by gravity are done
- slowly **over 20- to 30-minute**
- syringe with gravity-controlled OR given continuously by using an infusion pump.
- Residual gastric is measured every **4 hours**
- Approximates rate that of an oral feeding (**about 1 ml/min**).



• For breastfed infants,
weighing before
and after a feeding provides
documentation of intake
(1 gram gain 1 ml intake), but
should be used judiciously (Hall,
Shearer, Mogan, & Berkowitz, 2002)

• ارزیابی میزان شیر خورده شده از سینه مادر توسط نوزاد؟



اقدامات پرستاری پس از گاواز



- After feeding, position the infant on the right side to prevent aspiration
- **Document** size of the feeding tube, amount and quality of the residual
- type and quantity of fluid instilled (sterile water, breast milk, or formula), infant's response to the procedure.



عوارض گاواژ سریع



- vomit(with an attendant risk of aspiration)
- Diarrhea
- abdominal distention
- apneic episodes.
- fluid retention with cardiac compromise
- pronounced diuresis with hyponatremia



Finger Feeding



baby is not
attaching to
your breast
for feeds
(latching-on)



. The ideal size is 6F





milk is mixed with
salivary amylases
in the mouth
assisting with
digestion.



مزیت‌های تغذیه با انگشت



- 1-Baby learns to suckle as they would at the breast,
- 2-tongue and jaw move in a similar way to Breastfeeding,
- 3-milk is mixed with salivary amylases in the mouth assisting with digestion.
- 4-little risk of baby aspirating



www.unicef.org.uk/babyfriendly



- Wash your hands and make sure your nails are not too long
- Cut a larger hole in the top
- tip of your biggest finger (pad-side facing upwards)
- Cuddle your baby close .encourage them to root and open their mouth.
- If your baby gags, just move your finger back so that it is not so far into their mouth



عوارض همراه NG & OGTUBE



- 1-malposition (into the lung, esophagus, or intestine)
- rates of malpositioned 5% to 55.6%.^[5]





- range in size from 3.5 fr to 10 fr with an equally wide range of lengths
- , smaller residuals were obtained from smaller bore tubes and larger residuals were obtained from the larger bore tubes.





- 21-Daga SR, Lunkad NG, Daga AS, et al. Orogastric versus nasogastric feeding of newborn babies. *Trop Doct.* 1999;29:242–3.
- 5-Ellett MLC, Cohen MD, Perkins SM, et al. Predicting the insertion length for gastric tube placement in neonates. *JOGNN.* 2011;40:412–21.
- 31-Cohen MD, Ellett MLC, Perkins SM, et al. Accurate localization of the position of the tip of a naso/orogastric tube in children; where is the location of the gastroesophageal junction? *Pediatr Radiol.* 2011;41:1266–71.
- 47-Freer Y, Lyon A. Risk management, or just a different risk? *Arch Dis Child Fetal Neonatal Ed.* 2006;91:F327–9.

